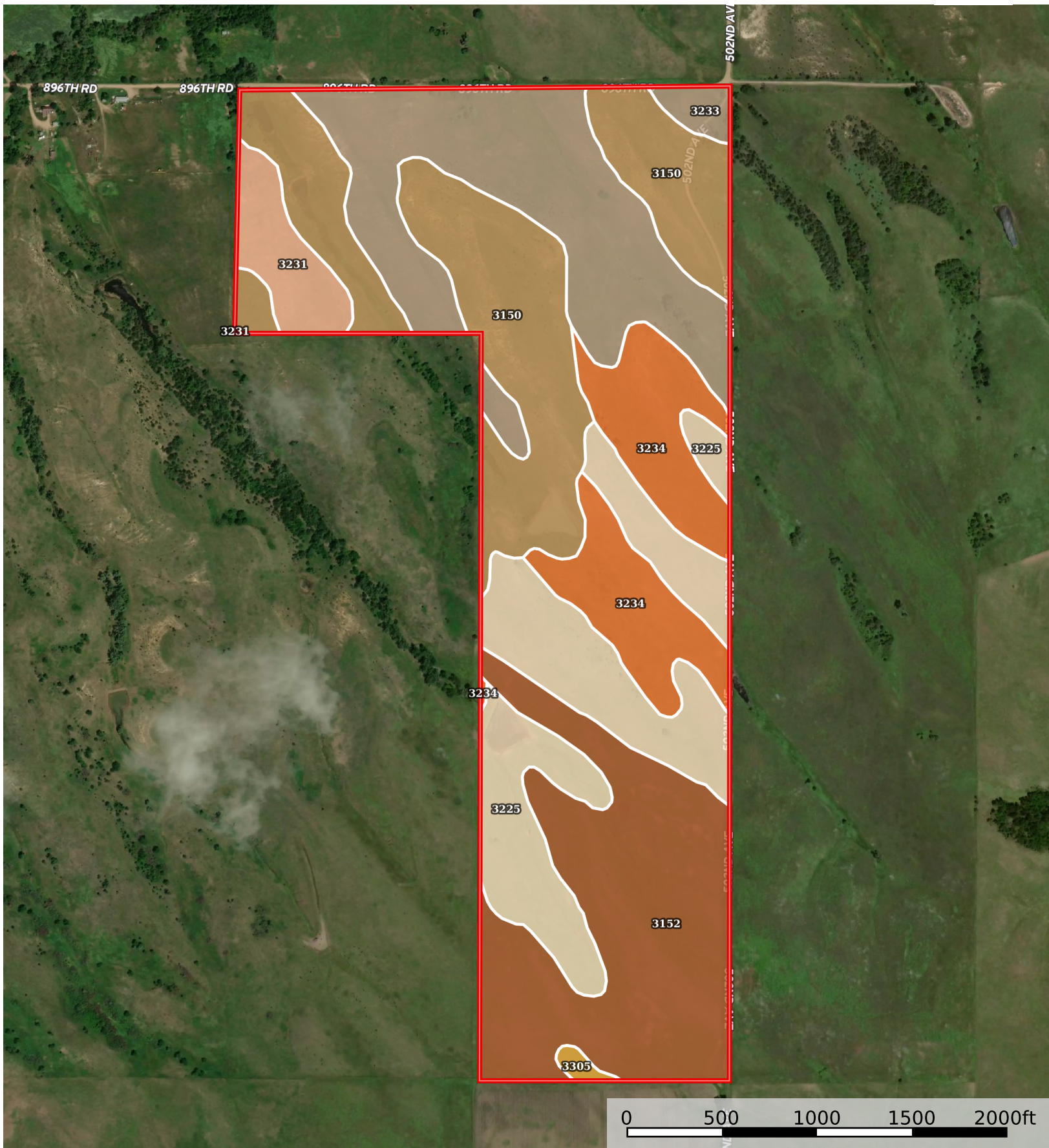



199.08 Acres - boyd County,
Nebraska, AC +/-



 Boundary

 Boundary 197.14 ac

SOIL CODE	SOIL DESCRIPTION	ACRES	%	CPI	NCCPI	CAP
3150	Bristow silty clay, 20 to 40 percent slopes	46.9	23.79	0	3	7s
3152	Boyd silty clay, 6 to 11 percent slopes	42.76	21.69	0	28	4e
3233	Monowi-Bristow silty clays, 6 to 11 percent slopes	40.05	20.32	0	22	4e
3225	Labu-Sansarc silty clays, 9 to 35 percent slopes	35.59	18.05	33	19	6e
3234	Monowi-Bristow silty clays, 11 to 30 percent slopes	23.75	12.05	0	15	6e
3231	Monowi silty clay, 6 to 11 percent slopes	7.36	3.73	0	28	4e
3305	Reliance silt loam, 2 to 6 percent slopes	0.73	0.37	86	53	3e
TOTALS		197.14(*)	100%	6.28	17.74	5.31









(*) Total acres may differ in the second decimal compared to the sum of each acreage soil. This is due to a round error because we only show the acres of each soil with two decimal.

Capability Legend

Increased Limitations and Hazards

Decreased Adaptability and Freedom of Choice Users

Land, Capability

								
	1	2	3	4	5	6	7	8
'Wild Life'	•	•	•	•	•	•	•	•
Forestry	•	•	•	•	•	•	•	
Limited	•	•	•	•	•	•	•	
Moderate	•	•	•	•	•	•		
Intense	•	•	•	•	•			
Limited	•	•	•	•				
Moderate	•	•	•					
Intense	•	•						
Very Intense	•							

Grazing Cultivation

(c) climatic limitations (e) susceptibility to erosion

(s) soil limitations within the rooting zone (w) excess of water